

Aimetis Symphony™

Version 6.9

Installation Guide

January 27, 2012



Disclaimers and Legal Information

Copyright © 2012 Aimetis Inc. All rights reserved.

This guide is for informational purposes only. AIMETIS MAKES NO WARRANTIES, EXPRESS, IMPLIED OR STATUTORY, AS TO THE INFORMATION IN THIS DOCUMENT.

Complying with all applicable copyright laws is the responsibility of the user. Without limiting the rights under copyright, no part of this document may be reproduced, stored in or introduced into a retrieval system, or transmitted in any form or by any means (electronic, mechanical, photocopying, recording, or otherwise), or for any purpose, without the express written permission of Aimetis Corp.

Aimetis may have patents, patent applications, trademarks, copyrights, or other intellectual property rights covering subject matter in this document. Except as expressly provided in any written license agreement from Aimetis, the furnishing of this document does not give you any license to these patents, trademarks, copyrights, or other intellectual property.

Aimetis and Aimetis Symphony are either registered trademarks or trademarks of Aimetis Corp. in the United States and/or other countries.

Portions Copyright © 1993-2012 ARH Inc.

Portions of this software are based in part on the work of the Independent JPEG Group.

Document History

Sym-6.9-P-100

Table 1. Changes to this manual

Date	Description
January 27, 2012	Release 6.9
November 2011	Release 6.8
August 2011	Release 6.7
6.6 changes	
July 6, 2011	REVISED: "Figure 1. Road map of first time installation" on page 19 "Before Running the Setup Wizard" on page 27 "Disabling Database Schema Modifications (ONLY if upgrading and ONLY for first server)" on page 27 "Enable Remote SQL Connections" on page 28
June 3, 2011	Icon change for Notes and Examples. "Conventions" on page iv. Font change - highly readable for both online and print documents.
May 16, 2011	New sections: "Installing License Plate Recognition (LPR)" on page 43 "Uninstalling License Plate Recognition (LPR)" on page 49 "Troubleshooting" on page 52
6.5 changes	
March 1, 2011	Changed value setting in AllowAutomaticDatabaseConfiguration to "0". "Disabling Database Schema Modifications (ONLY if upgrading and ONLY for first server)" on page 27
January 14, 2011	Added note below Table 3, "Database (SQL Server)," on page 8. Ensure that the SQL Server database is on a local network (100Mbps or greater) connected to the servers in the farm.
October 6, 2010	First version of this document. Symphony 6.5.3

Document Suite

Table 2. AIMETIS documents and videos

Document Name	Links
Symphony Release Notes	https://www.aimetis.com/Xnet/downloads/documentation.aspx
Symphony Installation Guide	https://www.aimetis.com/Xnet/downloads/documentation.aspx
Symphony Administration Guide	https://www.aimetis.com/Xnet/downloads/documentation.aspx
Symphony Analytics Guide	https://www.aimetis.com/Xnet/downloads/documentation.aspx
Symphony Client User Guide	https://www.aimetis.com/Xnet/downloads/documentation.aspx
Knowledge Base Articles	http://www.aimetis.com/Support/knowledgebase.aspx
Case Studies	http://www.aimetis.com/Solutions/customers-case-studies.aspx
White Papers	http://www.aimetis.com/Solutions/whitepapers.aspx
Application Video Samples	https://www.aimetis.com/Xnet/Marketing/collateral-library.aspx
Recorded Webinars	http://www.aimetis.com/Events/webinars.aspx
Product Tour	https://www.aimetis.com/Xnet/Marketing/collateral-library.aspx
Supported Video Devices List	http://www.aimetis.com/Support/supported-video-devices.aspx
Licensing	http://www.aimetis.com/Symphony/default--licensing.aspx
FAQ	https://www.aimetis.com/Xnet/Support/faqs.aspx

AIMETIS Xnet Portal

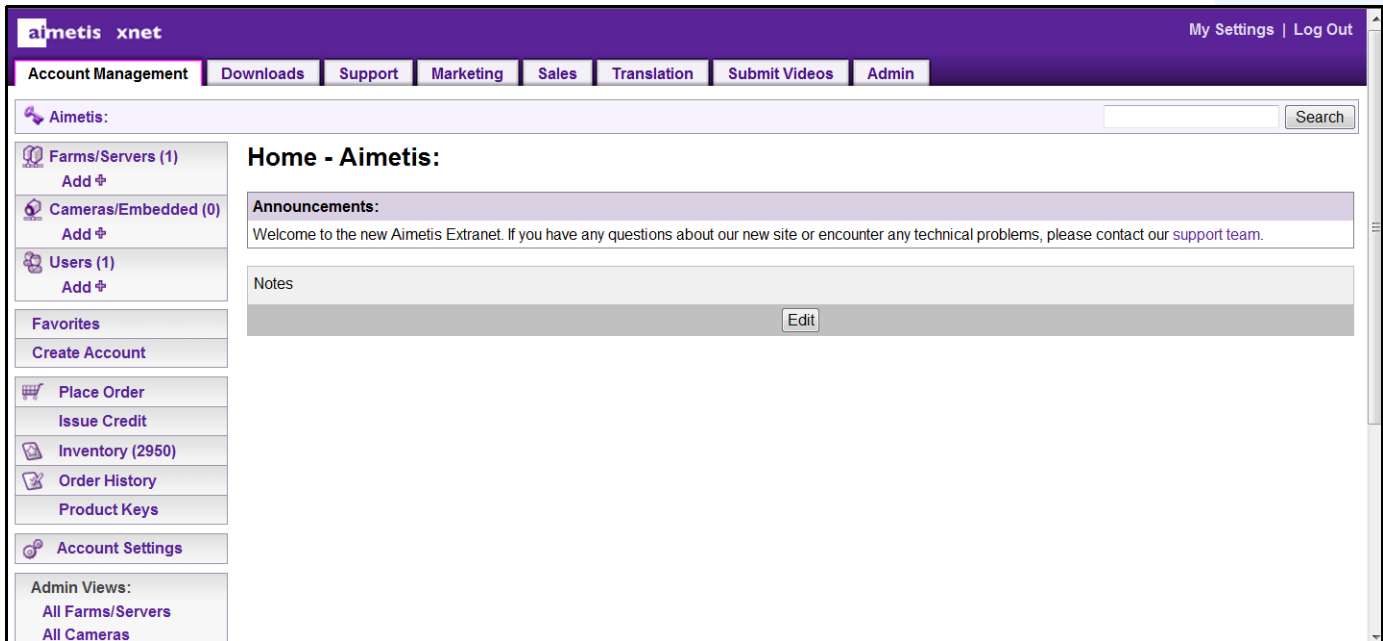


Figure 1. Aimetis Xnet home page

Xnet is the Aimetis Online Portal: www.aimetis.com/Xnet

You can :

- Order Licenses
- Manage Sub-Partner Accounts
- Access Technical Support & Downloads
- Access Sales & Marketing Tools
- Access Aimetis Software Translation



Note: Access to tools depends on account type, for example, Distributor, Certified Partner, Authorized Partner, End-User. For instructions, see [Table 3 on page vi](#).

Table 3. Instructions for using the Xnet

XnetXnet Instructions	Links
XnetXnet Training Manual - Resellers	https://www.aimetis.com/Xnet/Marketing/collateral-library.aspx
Recorded Webinar - Xnet Training - Distributors	https://www.aimetis.com/Xnet/Marketing/collateral-library.aspx

Table 3. Instructions for using the Xnet

XnetXnet Instructions	Links
Recorded Webinar - Xnet Training - Channel Partners	https://www.aimetis.com/Xnet/Marketing/collateral-library.aspx
Xnet Training Manual - Distributors	https://www.aimetis.com/Xnet/Marketing/collateral-library.aspx
Aimetis Symphony Architectural and Engineering Specification	https://www.aimetis.com/Xnet/Marketing/collateral-library.aspx
Hardware Benchmarks guidelines for 10, 20, 40 and 200 camera systems.	https://www.aimetis.com/Xnet/Marketing/collateral-library.aspx

Contact Us

Table 4. Contact links, addresses, phone numbers

Contact Type	Description
About AIMETIS	http://www.aimetis.com/Company/default.aspx
Contact link	http://www.aimetis.com/Company/contact.aspx
Support link	http://www.aimetis.com/Support/default.aspx
Americas	Aimetis Headquarters 500 Weber Street North Waterloo, Ontario, Canada N2L 4E9 Phone: +1866-544-2804 or +1 519-746-8888 Fax: +1 519-746-6444
EMEA	Aimetis GmbH Am Prime Parc 7 65479 Raunheim Germany Telefon: +49 (0) 6142 207 98 60 Fax: +49 (0) 6142 207 98 89 www.aimetis.de
Asia - Pacific	Aimetis China 5/F Standard Chartered Tower 201 Shiji Avenue Pudong Shanghai China 200120 Phone: 86-21-6182-6916 Fax: 86-21-6182-6777

Table of Contents

Getting Started	1
Overview and Prerequisites	2
Software Overview	3
Server Computer	3
Server and Client Computers	3
Client Software Interface	4
Server Software Interface	5
Symphony Server Licensing	6
Prerequisites	7
Server	7
Client	7
Operating Systems, Database, and Browsers	7
Client Prerequisites Installed Automatically	10
Server Prerequisites Installed Automatically	10
Symphony Installation and Data Folders	12
Symphony Server	12
Symphony Client	14
Upgrade Path	15
Upgrading from a Previous Version	15
From 5.4 to 6.9	15
From 6.0 to 6.9	15
From 6.1 to 6.9	16
From 6.2, 6.5, 6.6, 6.7, or 6.8	16
Upgrading a server farm containing multiple servers	16

Installation Instructions	18
Pre-installation	18
Installing Aimetis Symphony Server v6.9	19
Symphony Programs Installed	24
(Alternate) Installing Aimetis Symphony Server from the Command Line	25
Customizations	25
Disallowing Automatic Database Schema Modifications	25
Combining Command Line Options	26
Setup Wizard – Server/Farm Configuration	27
Before Running the Setup Wizard	27
Farm Setup	31
Farm Configuration Tab	32
Server Configuration Tab	38
Installing Aimetis Symphony Client	41
Installing Symphony Player	42
Installing License Plate Recognition (LPR)	43
Uninstalling Aimetis Symphony v6.9 Server	46
Uninstalling Aimetis Symphony Client	47
Uninstalling Aimetis Symphony Player	48
Uninstalling License Plate Recognition (LPR)	49
Uninstalling SQL Server Instance	50
Troubleshooting	52

Getting Started

Task	Link to instructions in this guide
Read overview and prerequisites	“Overview and Prerequisites” on page 2
Upgrade from a previous version	“Upgrade Path” on page 15
Perform a first-time installation of the product (Server/Client/Player)	“Installation Instructions” on page 18
Install using the command-line (optional)	“(Alternate) Installing Aimetis Symphony Server from the Command Line” on page 25
Configure the Server after InstallShield Wizard finishes	“Setup Wizard – Server/Farm Configuration” on page 27
Configure the database manually if the user does not have database Admin rights	“Manual Database Configuration” on page 27
If upgrading only, disable database schema modifications if the user does not have database Admin rights	“Disabling Database Schema Modifications (ONLY if upgrading and ONLY for first server)” on page 27
Enable SQL connections if your existing SQL Server is not located on local machine	“Enable Remote SQL Connections” on page 28
Install Aimetis Symphony Client (a default installation with the Symphony Server)	“Installing Aimetis Symphony Client” on page 41
Install Symphony Player (a default installation with Symphony Client)	“Installing Symphony Player” on page 42
Install License Plate Recognition (optional, if purchased)	“Installing License Plate Recognition (LPR)” on page 43
Remove the product	“Uninstalling Aimetis Symphony v6.9 Server” on page 46
	“Uninstalling Aimetis Symphony Client” on page 47
	“Uninstalling Aimetis Symphony Player” on page 48
	“Uninstalling License Plate Recognition (LPR)” on page 49
Remove the SQL server that was installed with the product on the local machine	“Uninstalling SQL Server Instance” on page 50

Overview and Prerequisites

Learn about...
"Software Overview" on page 3
"Symphony Server Licensing" on page 6
"Prerequisites" on page 7
"Server" on page 7
"Client" on page 7
"Operating Systems, Database, and Browsers" on page 7
"Client Prerequisites Installed Automatically" on page 10
"Server Prerequisites Installed Automatically" on page 10
"Symphony Installation and Data Folders" on page 12

Software Overview

An installation of Aimetis Symphony™ has two components: server software and client software.

Server Computer

The server computer functions as the intelligence management system that computes the most complicated and intricate tasks.



Figure 1. Server computer

At larger surveillance sites, the server computer may actually be multiple computers linked together to form a Server Farm



Figure 2. Server Farm

Server and Client Computers

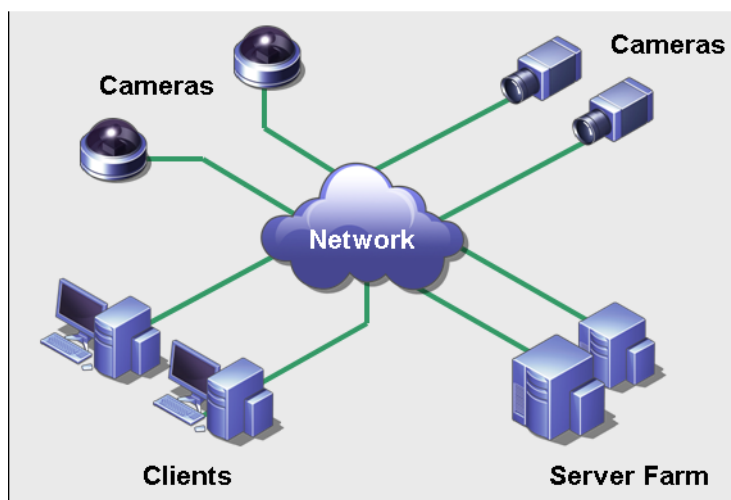


Figure 3. Server Farm with many clients

You can set up clients on many computers or workstations. A typical site would have many client computers connecting to a dedicated server computer. At larger sites, the server computer may actually be multiple computers linked together to form a Server Farm.

Note: For small deployments, the server and client computer can be one computer

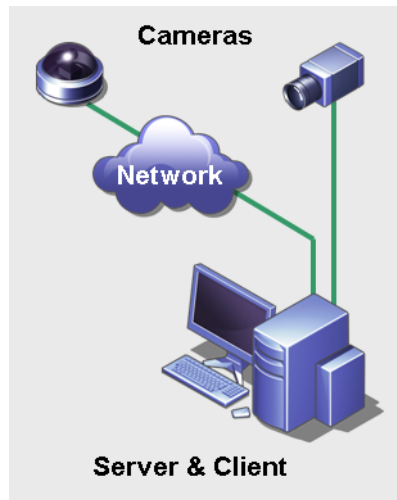


Figure 4. Server and Client on one computer

Client Software Interface

The client software provides the user interface for all tasks including monitoring, searching, reporting and configuration.

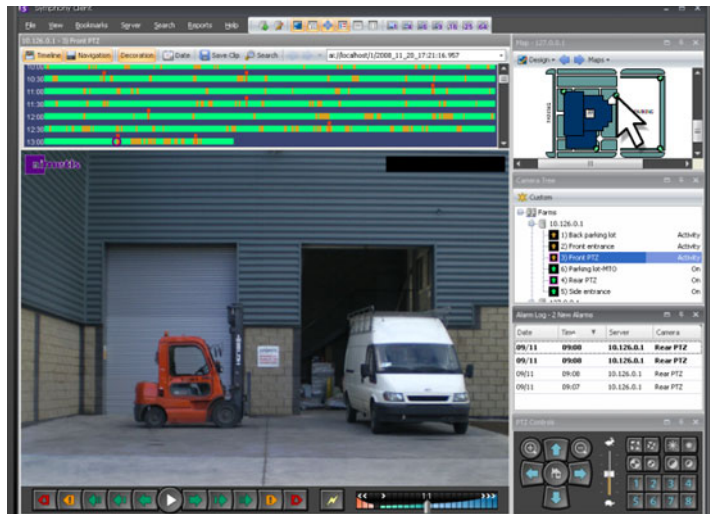


Figure 5. Symphony Client interface

The interface can be arranged over two monitors, and you can even use a Video Wall (a collection of monitors could be on a single wall in a room or in different physical locations).

Server Software Interface

The server computer is usually and ideally separate from client computers. This is not the case for Aimetis software.

In [Figure 6](#), “Symphony Client” appears in the blue title bar. This is the client interface. You access the server computer through the **Server** menu option in this interface.

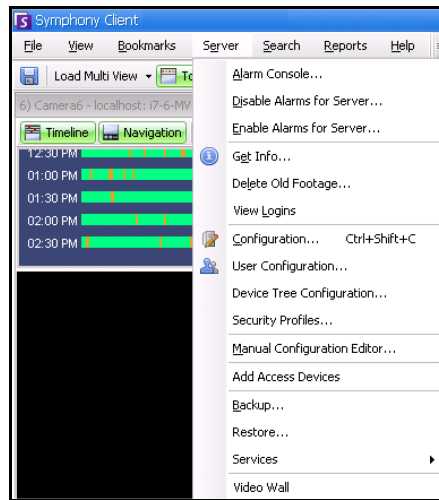


Figure 6. Server menu item in Symphony Client interface

The interface for both server and client are integrated so that you can connect (configure server tasks) from any client computer in a site. Personnel will often be at client workstations. They must be able to connect to the server (to set up features, for example) from their workstations.

The server software handles all video recording and analytics. It is the intelligence management system that computes the most complicated and intricate tasks.

Symphony Server Licensing

If you are upgrading an existing installation, ensure that your licenses are eligible for the software version you are installing. If not, contact your Aimetis distributor for an upgrade.

Aimetis Symphony is licensed on a per camera basis. Each physical computer can have multiple Symphony software licenses. The license types are: Standard, Professional and Enterprise. No server or client license fees apply.

License Type	Description
Symphony Server Standard License	Contains all the core video management features such as video recording from network and analog devices, video playback, search, and an integrated camera tree or site map for easy navigation.
Symphony Server Professional License	Contains all the core features of the Standard License plus advanced functionality such as server farms, access control integration and video walls. This license type is used in large deployments.
Symphony Server Enterprise License	Building on the functionality found in Professional, video analytics can be added on a per camera basis which augments the accuracy of alarm monitoring and includes business intelligence reporting such as people counting.

Licenses can be mixed per physical server, allowing Standard, Pro, and Enterprise to be used per single server. However, there is no advantage of having Standard and Professional licenses mixed on the same server since advanced VMS features will be available only if all licenses are Professional or higher.

Prerequisites

Server

- Any Intel CPU or any AMD CPU that supports SSE2 (for example, Opteron)
- 500 Megabytes of free disk space
- At least 1 Gigabyte of RAM

Client

- 200 Megabytes of free disk space
- 2 GHz or faster processor is recommended
- At least 1 Gigabyte of RAM

Operating Systems, Database, and Browsers

- **S** = Supported
- **R** = Recommended
- **G** = Recommended for a deployment of greater than 20 cameras

Table 1. SERVER Operating Systems - Windows

Symphony Product Version	Windows XP SP3 ^a	Windows Server 2003	Windows Vista ^a	Windows Server 2008 R2 ^b	Windows 7
6.5	S	S	S	S,R,G	S,R
6.6	S	S	S	S,R,G	S,R
6.7	S	S	S	S,R,G	S,R
6.8	S	S	S	S,R,G	S,R

a. See Windows Vista and XP Microsoft End of Support Solution Center

<http://windows.microsoft.com/en-us/windows/help/end-support-windows-xp-sp2-windows-vista-without-service-packs?os=other>

b. Windows 2008 R2 does not install sound components by default. You must install the Desktop Experience Windows component.

Table 2. CLIENT Operating Systems - Windows

Symphony Product Version	Windows XP SP3 ^a	Windows Server 2003	Windows Vista ^a	Windows Server 2008 R2 ^b	Windows 7
6.5	S	S	S	S	S,R,G
6.6	S	S	S	S	S,R,G
6.7	S	S	S	S	S,R,G
6.8	S	S	S	S	S,R,G

a. See Windows Vista and XP Microsoft End of Support Solution Center <http://windows.microsoft.com/en-us/windows/help/end-support-windows-xp-sp2-windows-vista-without-service-packs?os=other>

b. Windows 2008 R2 does not install sound components by default. You must install the Desktop Experience Windows component.

Table 3. Database (SQL Server)

Symphony Product Version	SQL Server 2000	SQL Server 2005	SQL Server 2008
6.5		S	R
6.6		S	R
6.7		S	R
6.8		S	R

Ensure that the SQL Server database is on a local network (100 Mbps or greater) connected to the servers in the farm.

Table 4. Browsers

Symphony Product Version	IE6 ^a	IE7 ^a	IE8 ^a	Firefox 3.x	Safari 5	Chrome 5
6.5			R	*	*	*
6.6			R	*	*	*
6.7			R	*	*	*
6.8			R	*	*	*

a. Limited support for 64-bit version of IE.

*Limited support (reports, alarms, timeline, JPGs). No live or historical video.

Table 5. Virtualization Platforms

Symphony Product Version	Microsoft Virtual PC	VMware Server
6.5	S	R
6.6	S	R
6.7	S	R
6.8	S	R

Client Prerequisites Installed Automatically

The following prerequisites are required by Symphony and (if necessary) will be installed automatically.

Table 6. Client Prerequisites

Item	Version	commandline install
XML 6.0 SP1 (x86)	6.10.1129.0	msxml6_x86.msi /qn
XML 6.0 SP1 (x64)	6.10.1129.0	msxml6_x64.msi /qn
Visual C++ 2008 Redistributable Package (x86)	9.0	(components installed by merge modules in installer)
Microsoft .NET Framework 2.0 SP2 (32 bit, exe install)	2.0 SP2 32bit	NetFx20SP2_x86.exe /q /norestart
Microsoft .NET Framework 2.0 SP2 (64bit where applicable, exe install)	2.0 SP2 64bit	NetFx20SP2_x64.exe /q /norestart (only on 64-bit machines)
Visual C++ 8.0 Redistributable (exe install)	8.0 (Service Pack 1 with ATL Security Update, 8.0.50727.4053)	Vcredist_x86_ATLUpdate.exe /q
Microsoft Data Access Components (MDAC) 2.8	N/A	Setup.exe
Aimetis Core	6.8.0.0	Msiexec /i AimetisCoreInstall.msi /q

Server Prerequisites Installed Automatically

The following prerequisites are required by Symphony and (if necessary) will be installed automatically.

Table 7. Server Prerequisite

Item	Version	commandline install
XML 6.0 SP1 (x86)	6.10.1129.0	msxml6_x86.msi /qn
XML 6.0 SP1 (x64)	6.10.1129.0	msxml6_x64.msi /qn
Visual C++ 2008 Redistributable Package (x86)	9.0	(components installed by merge modules in installer)
Microsoft .NET Framework 2.0 SP2 (32 bit, exe install)	2.0 SP2 32bit	NetFx20SP2_x86.exe /q /norestart
Microsoft .NET Framework 2.0 SP2 (64bit where applicable, exe install)	2.0 SP2 64bit	NetFx20SP2_x64.exe /q /norestart (only on 64-bit machines)

Table 7. Server Prerequisite (Continued)

Item	Version	commandline install
Visual C++ 8.0 Redistributable (exe install)	8.0 (Service Pack 1 with ATL Security Update, 8.0.50727.4053)	Vcredist_x86_ATLUpdate.exe /q
Microsoft Data Access Components (MDAC) 2.8	N/A	Setup.exe
Aimetis Core	6.8.0.0	Msiexec /i AimetisCoreInstall.msi /q
Aimetis SNMP	6.8.0.0	SNMPInstallLauncher.exe "INSTALLDIR=[INSTALLDIR]" (Required files, SNMPInstallLauncher.exe, SNMPSetup.exe, SNMPSetup64.exe)
Microsoft SQL Server Express 2005 Service Pack 2(Optional)	9.00.3042.00	SQLEXPR.exe /qn ADDLOCAL=ALL INSTANCENAME=AIMETIS SECURITYMODE=SQL SAPWD=[SQL_SA_PASSWORD]
OPC Core Components 2.00 Redistributable	2.00.2.20	N/A

Symphony Installation and Data Folders

Symphony Server

Symphony server stores three kinds of data to your hard disk.

- Binary application files
- Video data
- Configuration information stored in a SQL Server Database.

Symphony is installed by default in

```
C:\Program Files\Aimetis\Symphony\
```

The default path for all data (log files, video, etc.) is

```
C:\Program Files\Aimetis\Symphony\data\
```

You can change the:

- default installation path during installation of **Aimetis Symphony v6.6**.
- default data path during the Setup Wizard.

[Table 8](#) provides a summary of key folders

- <AppRoot> denotes installation path
- <DataRoot> denotes data path)

Table 8. Key Folders

Path	Description
<AppRoot>_bin	Binaries for all Aimetis Symphony v6.6 executables and DLLs
<AppRoot>_docs	Small .txt files storing alarm instructions and Aimetis.com's IP address
<AppRoot>_tools	Tools and utilities that Aimetis Support Specialists use to diagnose system problems
<AppRoot>_Scripts	Scripts for configuring Symphony. For example, a database schema creation script for manually creating the Symphony database
<AppRoot>\WebRoot	Web files & binaries
<DataRoot>_footagearchive	Video data recorded from all cameras
<DataRoot>_images	A cache of JPEG images generated from the footage
<DataRoot>_logs2	All server log files useful for debugging and diagnosing problems.
<DataRoot>_searches	Stored searches. These files will not be automatically cleaned and searches must be manually deleted by user
<DataRoot>_signals	Timeline data (green, yellow, red)
<DataRoot>_signals2	XML metadata for searches and reports

Table 8. Key Folders (Continued)

Path	Description
<DataRoot>\Reports	Location for generated reports. Depending on write-permissions, a generated report will be stored in the \Data\Reports folder on the master server machine. The folder is generated ONLY after a report has been run and saved.
\windows\temp\config_backup\	Location for automatic backups of server configuration

In addition to the folders listed in [Table 8](#), Symphony Server adds the following registry keys:

HKLM\Software\Aimetis

Some configuration data for the server is stored here, such as the database connection string.



Caution: It is highly recommended that the <DataRoot> folders are not on the same physical Hard Disk as Windows and <AppRoot>. This is to limit the amount of disk read and writes to the OS disk to prevent catastrophic failure.

Symphony Client

Aimetis Symphony Client is installed by default in

`C:\Program Files\Aimetis\Symphony Client\`

Key Folders

Table 9. Key Folders for Client

Folder	Description
<code>C:\Documents and Settings\%WINUSER%\Application Data\Aimetis\</code>	All client configuration, such as window layouts, general configuration, logs
<code>C:\Documents and Settings\All Users\Application Data\Aimetis\</code>	This folder contains RegisteredFarms.xml and FarmList.xml



Note: These paths may be slightly different on different operating system versions.

These files define the farms that have been registered. The default is whatever the client configuration path is set to but you can override this. The paths in [Table 9](#) can be configured via the Aimetis Symphony Client **Settings** dialog box.

- From the **View** menu, select **Settings**.

Two (optional) variables can be used in the path names:

- **%WINUSER%** represents the Windows username of the current user. This is used in the default path so Symphony can store the configuration in the current user's application data folder.
- **%SYMPHONYUSER%** represents the Symphony username. This is valid only if credentials are required for login to Symphony.

If a customer prefers to keep these settings global, do not use either of these variables when specifying the paths.

In addition to the folders in [Table 9](#), Aimetis Symphony Client adds the following registry keys:

`HKLM\Software\Aimetis\AiraExplorer`

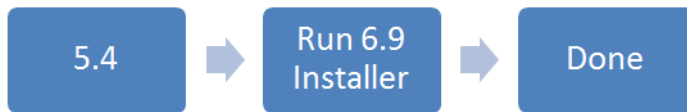
Upgrade Path

Upgrading from a Previous Version



Caution: Before upgrading, perform a backup of your existing installation.

From 5.4 to 6.9



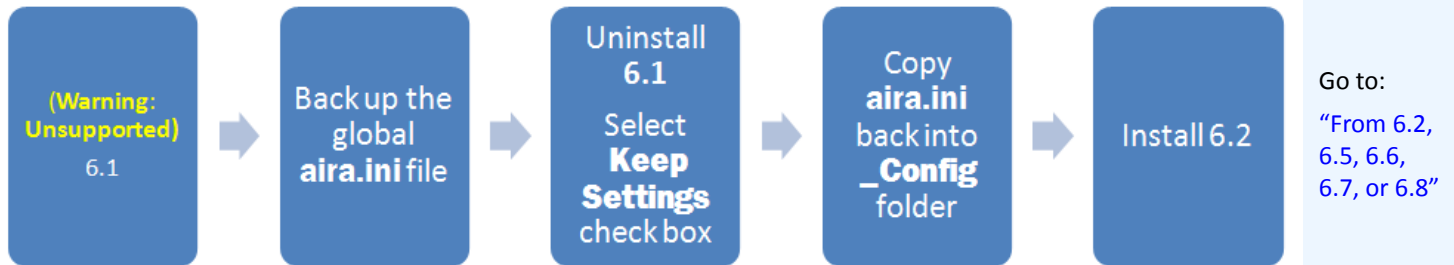
From 6.0 to 6.9

Upgrading from 6. 0 is **NOT** supported. You may try the following upgrade path.

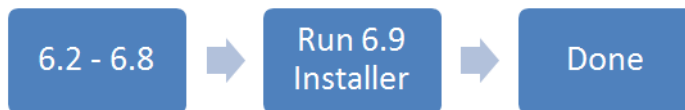


From 6.1 to 6.9

Upgrading from 6.1 is **NOT** supported. A new installation is recommended; however, you may try the following upgrade path.



From 6.2, 6.5, 6.6, 6.7, or 6.8



Upgrading a server farm containing multiple servers

You must do the following:

- Upgrade all servers to the same version.
- Upgrade any redundant servers first, followed by other servers.
- Do not make any configuration changes using a previous version of the software once you have started the process of upgrading a server farm.

Procedure

To upgrade your version of Symphony server to the latest version:

1. Run the latest installer to upgrade.
 - You do not need to manually uninstall previous versions
 - You do not need to manually move any cameras
 - Any required components missing on your machine are listed in the InstallShield Wizard dialog box. The installer checks for any previous versions of Aimetis software installed on the machine. If any previous versions exist, **UninstallPreviousVersions** is displayed under **Requirement** column in the wizard dialog box.
2. To install missing components and to uninstall a previous version, click **Install**.
3. After reviewing the license and warranty information in the License Agreement screen, click **I accept the terms of the license agreement**.
4. Click **Next**. Symphony v6.9 will be installed to the location specified. This will be the location of your previous install. You cannot change this location.
5. Click **Install**. Your system is now upgraded to v6.9.

Installation Instructions

Pre-installation

Your Symphony™ v6.9 configuration depends on the size of your camera deployment, your geographic considerations, and the product integration with other systems. You need to consider network and hardware specifications, standalone versus multi-server configurations and the following factors.

You must:

1. Have a valid Aimetis Xnet Account

Before installing the Symphony server, you must have a valid Aimetis Xnet account. During installation of the software you will be prompted for your Xnet login credentials, so that Symphony can download and install the appropriate license automatically.

See <http://www.aimetis.com/xnet/login.aspx>.

2. Assess your hardware requirements

Prior to installing Symphony Server, you must assess hardware requirements to meet the needs of your organization's deployment plan. An organization with a single location and 10 cameras will have different requirements than an organization with multiple locations and over 1000 cameras. For help calculating hardware requirements, go to XNet, the Aimetis Online Portal: <http://www.aimetis.com/xnet/login.aspx>.

3. Understand the concept of multi-server deployments (Server Farms)

A **server farm** is a collection of computer servers used to accomplish server needs beyond the capability of one machine. Server farms often have backup (redundant) servers, which can take over the function of primary servers in the event of a primary server failure.

Aimetis Symphony takes advantage of server farms by distributing the workload of camera processing across several servers. Symphony also supports server farm redundancy by moving camera processing from a 'down' server to a 'redundant' server. With Symphony, all live and redundant servers are homogeneous in that they all run the same software services and can potentially run the processing of any camera.

Installing Aimetis Symphony Server v6.9

The following instructions are for a first time installation of the product.

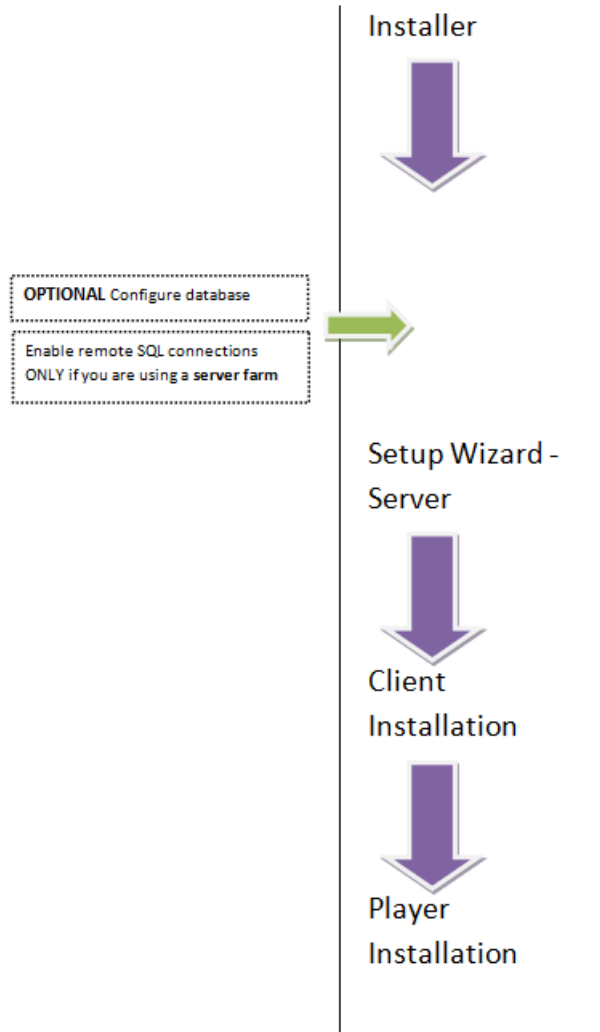


Figure 1. Road map of first time installation



Note: At any point during the installation, you can click the **Cancel** button.

You are asked whether you want to cancel the server installation.

Click **No** to continue with the installation.

or

Click **Yes** to cancel this installation. This will rollback changes that have been made to your system. Click **Finish** to exit the **InstallShield Wizard**.

Procedure

To install Symphony v6.9 server:

1. Run the installer.
 - You do not need to manually uninstall previous versions
 - You do not need to manually move any cameras
 - Any required components missing on your machine are listed in the InstallShield Wizard dialog box ([Figure 2](#)).
2. To install missing components, click **Install**.

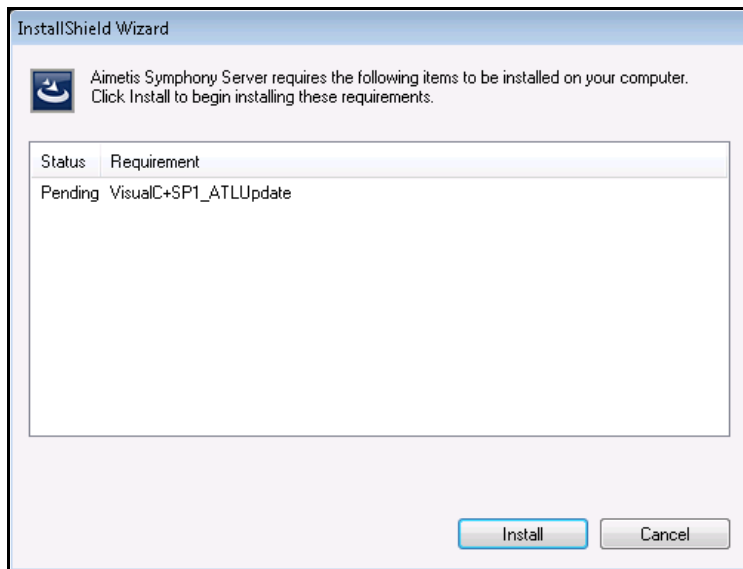


Figure 2. Missing components listed

3. After reviewing the license and warranty information in the License Agreement screen ([Figure 3 on page 21](#)), click **I accept the terms of the license agreement**.

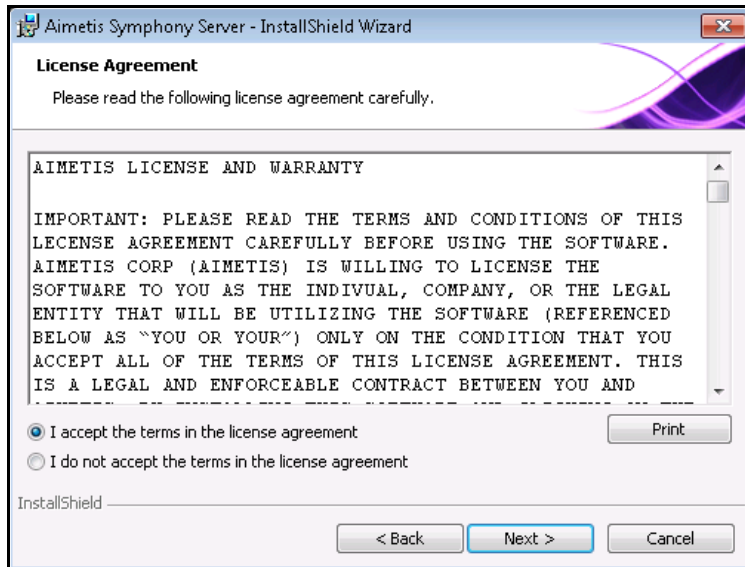


Figure 3. License agreement

4. Click **Next**. The SQL Server screen is displayed (Figure 4).
5. By default, the **Install SQL Server 2005 Express** check box is selected. This database will be installed with the named Instance AIMETIS.



Figure 4. SQL Server screen with Install SQL Server 2005 Express check box selected

- If you want the SQL Server installed (recommended):

1. Enter a password for the database connection. It will be used by the administrator (system administrator user). The password must contain at least 8 characters and be a combination of 3 of the 4 following types of characters:

- Upper case letters (Examples: ABC)
- Lower case letters (Examples: abc)
- Digits (Examples: 123)
- Symbols (Examples: #_!) but not @

2. Enter the same password in both fields and click **Next**.

If the password does not meet these requirements you will see the following message on the screen when you click the **Next** button.

The password you have entered does not meet the strength requirements
If the passwords do not match, you will see the following message on the screen when you click the **Next** button.

The passwords you have entered do not match. Please re-enter them.

- If you do not want to have SQL Server installed, clear the **Install SQL Server 2005 Express** check box.
 - If your existing SQL Server is not located on the local machine or if you have multi-server farms, you must enable TCP/IP connections on the remote machine's database and open up the firewall to allow connectivity between the Symphony Server and the database (default SQL Server port is 1433). See ["Enable Remote SQL Connections"](#) on page 28.
6. Click **Next**. The **Ready to Install the Program** screen appears ([Figure 5](#)).

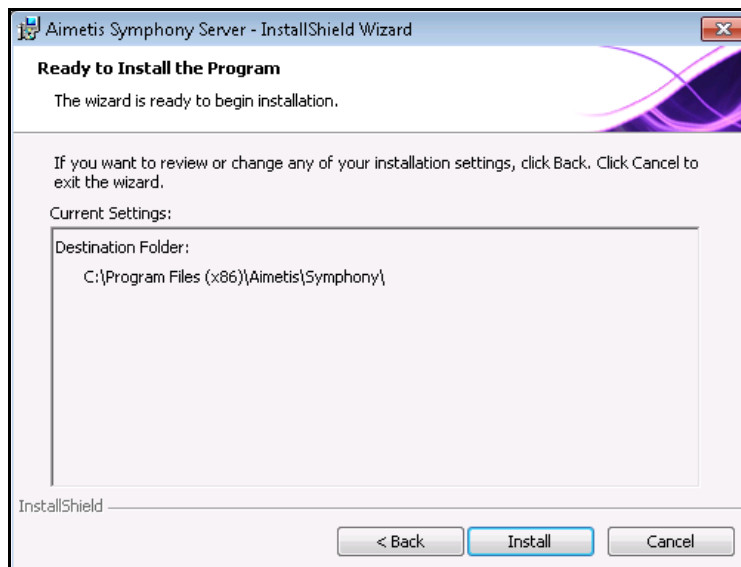


Figure 5. Destination folder

7. (Optional) To change the installation location of Symphony Server, click **Back** and then the **Change** button. You are not required to change this value.
 - In the **Change Installation Folder** screen, enter the folder path in the **Folder name** field and click **OK**. The new destination is displayed next to the folder icon. (You can use the folder navigation in the **Look in** portion of the screen to navigate to the desired location.)
8. Click **Next**. The **Ready to Install the Program Screen** appears.
9. Review the data in the **Current Settings** area. If this information is correct click **Install** to proceed with the installation.
10. To complete the installation, click **Finish** (Figure 6).

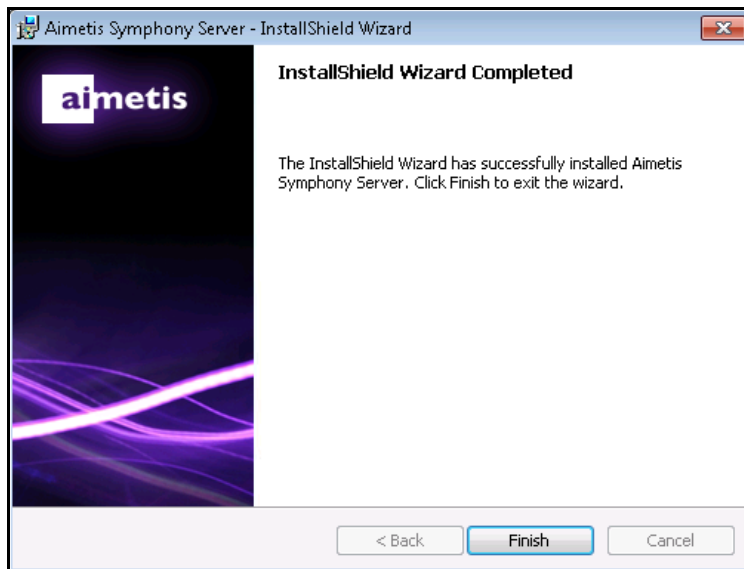


Figure 6. Installation complete

11. Go to ["Setup Wizard – Server/Farm Configuration"](#) on page 27.

Symphony Programs Installed

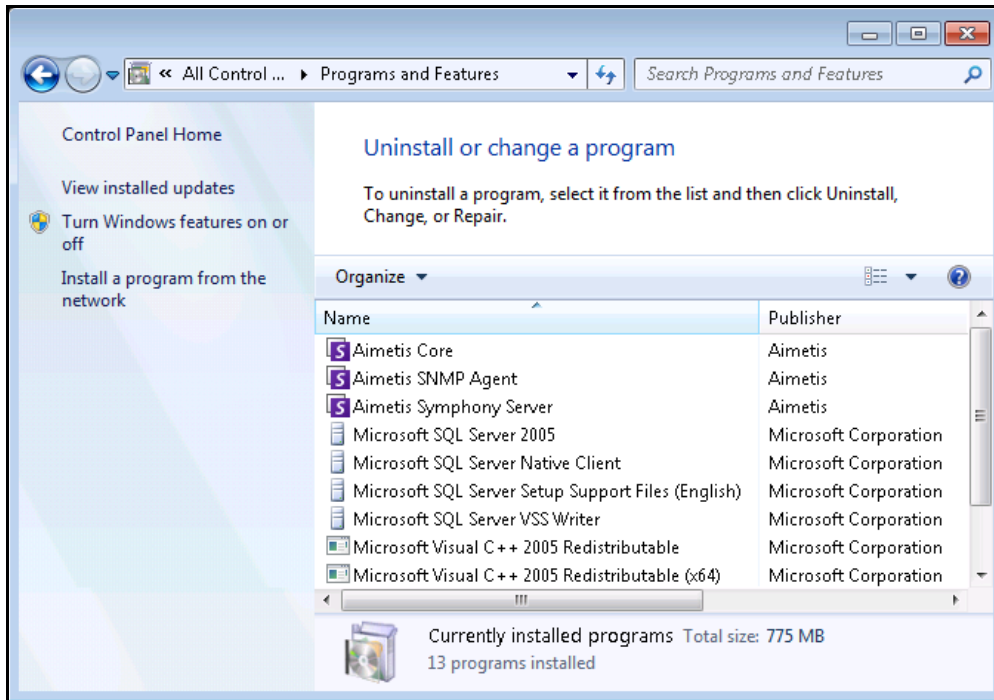


Figure 7. Symphony Programs installed during Server and Client Installation - Windows 7 Control Panel

(Alternate) Installing Aimetis Symphony Server from the Command Line

Various options can be configured by launching the installer from the command line.

- ["Customizations"](#)
- ["Disallowing Automatic Database Schema Modifications"](#)
- ["Combining Command Line Options" on page 26](#)



Note: In the command line, do **not** include a space between the **/v** and the quotation "character. The installation will fail if you include a space.

Customizations

Algorithms can be configured to be available (visible) or hidden in the Aimetis Symphony Client user interface by providing a default state on the command line. For example, to hide the VE130 algorithm use a command line such as the following:

```
setup.exe /v"CUSTOMIZATIONS=Intel_VE130=OFF"
```

The general format is:

```
setup.exe /v"CUSTOMIZATIONS=AlgorithmName=ON|OFF;AlgorithmName=ON|OFF..."
```

Disallowing Automatic Database Schema Modifications


By using the **ALLOWDBSETUP** command line option, the Setup Wizard can be restricted from attempting to automatically make database schema modifications. This is a useful feature if the database user does not have creation/alter rights for the database.

When **ALLOWDBSETUP** is set to **false**, the Setup Wizard will skip the schema modification portion of setup. A SQL script is provided with the product to allow a database administrator to do the necessary modifications. This script is located in the **_Scripts** folder.

Valid values for **ALLOWDBSETUP** are as follows:


Table 1. Allowable Values

Task	Allowable Values
To restrict schema modifications:	0, false, False (or any other casing of false)
To enable allowing schema modifications (this is the default value when the parameter is not specified):	1, true, True (or any other casing of true)

Example 1	Using a command line
	To restrict schema modifications use a command line such as the following: <code>setup.exe /v"ALLOWDBSETUP=0"</code>

Combining Command Line Options

All of the command line options can be combined for use. Use a single `/v"[settings]"` string with all options specified inside the quotes.

Example 2	Command-line options
	To install to a non-default locations with algorithm customizations and restricting database schema modifications the command line would be as follows: <code>setup.exe /v"INSTALLDIR="D:\\MyInstallFolder\\" CUSTOMIZATIONS=Intel_VE130=OFF ALLOWDBSETUP=false"</code>

Setup Wizard – Server/Farm Configuration

The Setup Wizard opens automatically at the end of installation.

Before Running the Setup Wizard

You must consider these important tasks before running the Setup Wizard:

- [“Manual Database Configuration”](#)
- [“Disabling Database Schema Modifications \(ONLY if upgrading and ONLY for first server\)”](#)
- [“Enable Remote SQL Connections” on page 28](#) (ONLY if using a server farm at this point in the installation process)

Manual Database Configuration

In some cases, the database configuration needs to be completed outside of the Setup Wizard. For example, if the database user for Symphony does not have Admin rights to the database, it may be necessary to have a database administrator configure the database before running Setup Wizard.

A SQL script is provided with the installed product. It is located in the **_Scripts** folder inside the install directory. The default database name specified in the script is Symphony. If a different database name is desired, or the script is being used to update an existing database, each instance of Symphony should be replaced with the appropriate database name before running the script.

Disabling Database Schema Modifications (ONLY if upgrading and ONLY for first server)

There are times when it is beneficial to disable allowing schema modifications from the Setup Wizard. For instance, if the database user for Symphony does not have Admin rights for the database, and attempts schema modifications when the Setup Wizard is running, the user will receive an error. In this situation, the administrator must configure the database beforehand (see [“Manual Database Configuration”](#)) and then configure the Setup Wizard so that it does not display an error while running.

Note: If you want to disable allowing database schema modifications during a **fresh installation**, then you can only under the following conditions:



- If you have used the scripts (from the **_Scripts** folder inside the install directory) to manually configure the database, then you must disable allowing database schema modifications for ALL servers.
 - If you have NOT manually configured the database, then you must disable allowing database schema modifications for all servers BUT the first server.
-

Procedure

To prevent the Setup Wizard displaying a schema modification error:

1. Open the **SetupWizard.exe.config** file, located in the **_bin** folder.
2. In the **appSettings** section of the file, you will find a key setting for **AllowAutomaticDatabaseConfiguration**. Change the value setting to **“0”** so as to disable schema modifications:

```
<add key ="AllowAutomaticDatabaseConfiguration" value ="0"/>
```

This will accomplish the same result as using the install command line setting described in [“Disabling Automatic Database Schema Modifications” on page 25](#).

Enable Remote SQL Connections

You must enable TCP/IP connections for your existing SQL Server if not located on local machine.

1. Open the **SQL Server Configuration Manager**. This can usually be found in the **Start Menu**, under the SQL Server entry.
2. Expand the **SQL Server Network Configuration** node. Click on **Protocols** for [InstanceName]. If you are using the database that was installed by the Aimetis Symphony Server installer, then the InstanceName will be AIMETIS.
3. Right-click on the **Named Pipes** protocol and select **Enable** from the menu.
4. A warning message is displayed. Click **OK**.
5. Right-click on the **TCP/IP** protocol and select **Enable** from the menu (Figure 8).

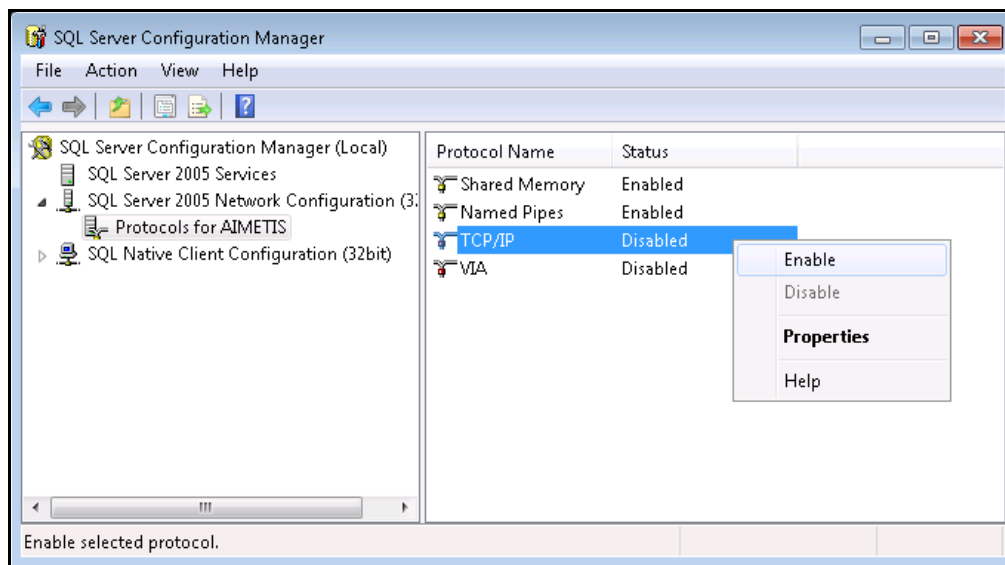


Figure 8. Enable TCP/IP

6. A warning message is displayed. Click **OK**. The protocols should now be configured (Figure 9).

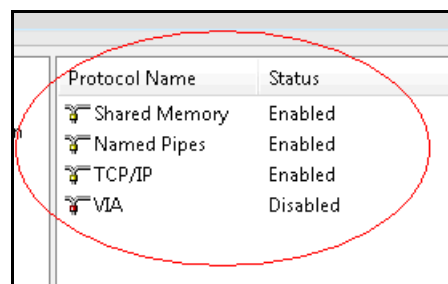


Figure 9. Protocols configured

7. Go to the **SQL Server Services** section. Right-click on the **SQL Server** entry for the appropriate InstanceName. Select **Restart** from the menu to restart the service (Figure 10).

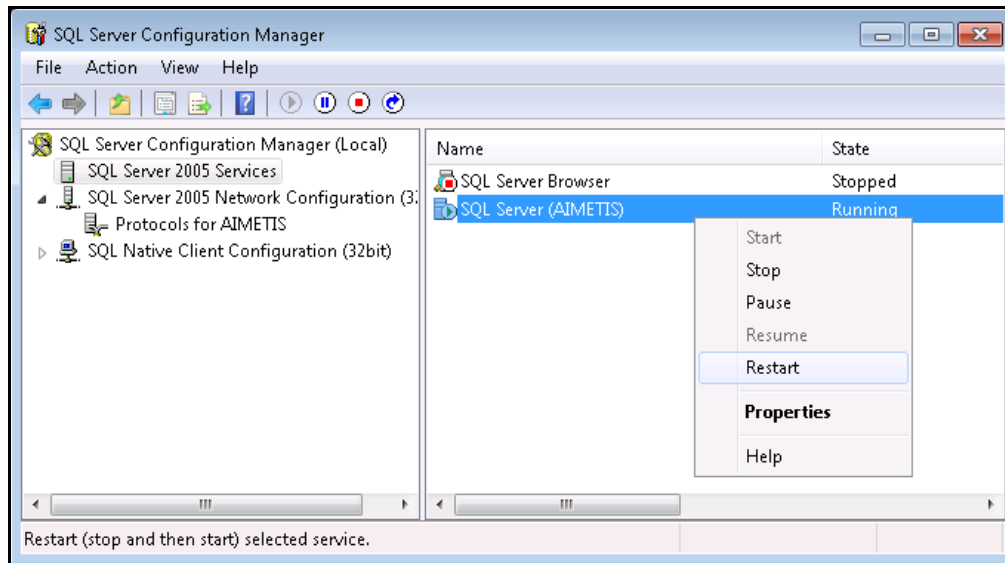


Figure 10. Restart service

8. Right-click on the **SQL Server Browser** entry. Select **Properties** from the menu to open the **Properties** window.
9. Click the **Service** tab. From the **Start Mode** drop-down list, select **Automatic** and click **Apply**.
10. In the **Log On** tab, click the **Start** button to start the SQL Browser service.
11. Click **OK** to close the **Properties** dialog box. The services should now both be in the **Running** state. The SQL Server instance should now accept remote connections.

SQL Security Requirements

During creation of the database, the user must have admin rights to the database, as well as rights to create the database. Database schema modification can be done manually, outside of the product. See [“Manual Database Configuration” on page 27](#).



For execution of the product, the database user must have the following set of minimum security permissions:

- SELECT, INSERT, UPDATE, DELETE for all generated tables.
- SELECT, INSERT, UPDATE, DELETE for all generated views.
- EXECUTE for all generated stored procedures.

Procedure

To manually run the Setup Wizard:

- From the **Start Menu**, select **Aimetis**, and then **Setup Wizard**.

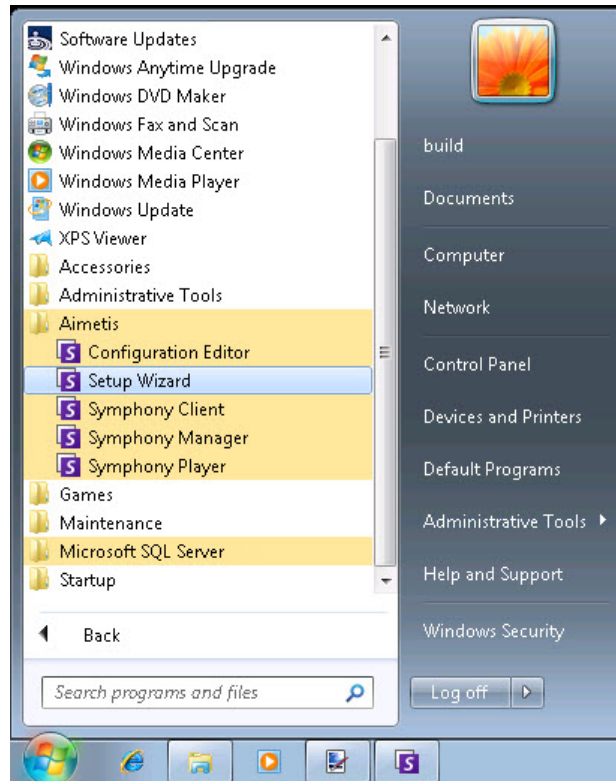


Figure 11. Start Menu - Aimetis > Setup Wizard

Farm Setup

You can create a server farm two ways:

- One at installation - instructions follow
- By merging existing farms into a single farm - refer to the **Symphony Administrator Guide**.

When setting up a farm...	Procedure
Process flow	Fully complete the Setup Wizard on a single server before attempting it on the next. Do not run the Setup Wizard on multiple servers at the same time.
Database	Connect all servers in the farm to the same database.
XNet name and credentials	Enter the same XNet farm name and credentials on each server in the farm.
XNet License	Ensure that the XNet license contains the MAC address of each server in the farm. If you are running the Setup Wizard on a machine that has a valid internet connection (Online Install), then your MAC address will automatically be added to your license during the setup process.

Farm Configuration Tab

The Setup Wizard opens the Symphony **Setup** window, displaying two tabs:

- **Farm Configuration** - [Figure 12](#)
- **Server Configuration** - [Figure 19 on page 38](#)

The screenshot shows the 'Symphony Setup' window with the 'Farm Configuration' tab selected. The window title is 'Symphony Setup' and it has standard Windows window controls. The 'Farm Configuration' tab is active, and the 'Server Configuration' tab is also visible. The main content area contains the following sections:

- Database:** A section with a warning icon and the text 'The information provided on this page applies to all servers in the Symphony farm.' It includes a 'Server Name' dropdown menu (set to 'WIN-K6T44FG29EK\aimetis') and a 'Database' dropdown menu (set to 'aira').
- User Information:** A section with two radio buttons: 'Use integrated authentication' (unselected) and 'Use SQL Server authentication' (selected). Below are 'Username' and 'Password' text boxes, both containing 'sa'.
- License Registration:** A section with two radio buttons: 'I'm Online' (selected) and 'I'm Offline' (unselected). It includes a 'Farm name' text box, 'XNet User name' and 'XNet Password' text boxes, and a 'Licensing Mode' section with 'Trial Farm' (unselected) and 'Licensed Farm' (selected) radio buttons, and an 'Allocate Licenses' button.
- Symphony Security:** A section with two radio buttons: 'Symphony Security' (selected) and 'Active Directory Integration' (unselected). It includes an 'LDAP URL' text box with an 'Auto Discover' button and an example 'LDAP://DC=aimetis,DC=com'. To the right is a 'Symphony Administrative User' section with 'User Name' and 'Password' text boxes.

At the bottom of the window are 'Apply' and 'Cancel' buttons. The 'Farm Configuration' tab has a warning icon, and the 'Server Configuration' tab has a warning icon. The 'Verify' buttons in the 'License Registration' and 'Symphony Security' sections have warning icons. The 'Edit' button in the 'User Information' section has a green checkmark icon.

Figure 12. Farm Configuration tab in the Symphony Setup window

